



**Geilo IL og IL Gular invite you to O-festivalen
20.-22.juni 2025**



This is the Norwegian orienteering associations main annual event aimed at everyone – and thus covering all levels, ages and classes.

It consists of three events and is organized annually the 3rd weekend in June as a sprint competitions friday evening, a middle distance saturday and a long distance sunday. In recent years it has gathered about 2000 competitors.

**Its location varies from year to year and in 2025 it will take place in and around the small mountain village Geilo situated roughly half way between Oslo and Bergen by the scenic railway line between these to cities, "Bergensbanen".
Traveling to O-festivalen is easy by taking the railway line (www.vy.no) from Bergen or Oslo.**



Program:

Friday 20 June: Sprint – Arena Slåttajordet

Saturday 21 June: Middle Distance – Arena Ustedalen

Sunday 22 June: Long Distance – Arena Slåttajordet

All three days are World Ranking Event (WRE) and Norwegian Cup for junior and senior. There will be courses for all regular classes as well as direct courses with the possibility of registration on race day. Team competition for children between 8 to 12 years on Saturday.



Terrain Long Distance



Timetable

Friday 20 june:

- First start open classes at 5:00 pm
- First start ordinary classes at 6:00 pm

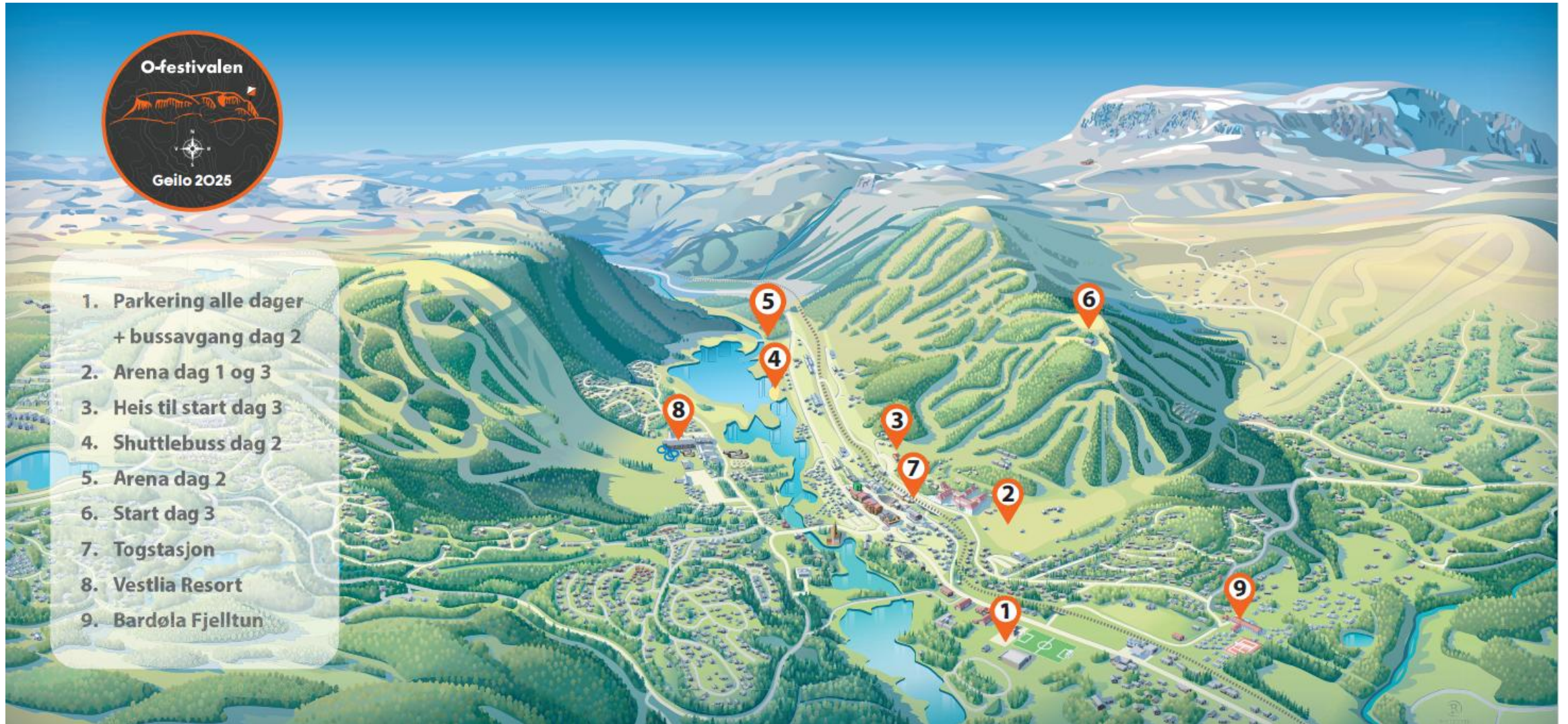
Saturday 21 june

- First start open classes at 9:30 am
- First start ordinary classes at 10:30 am

Sunday 22 june

- First start open classes at 9:00 am
- First start ordinary classes at 10:00 am

Overview





Arena and arrival

Friday June 20:

Arena at Slåttajordet ski center located on the outskirts of Geilo city center. Car parking at Geilo sport center and school area located along main Road 7 just east of the city center. There will be a marked walk route from parking to arena, approx. 1 km.

Saturday June 21:

Arena Ustedalen located along the western side of Ustedalsfjorden, approx. 3 km from the city center. No parking at the arena! There will be a free shuttle bus from the parking at Geilo sport center. From the bus stop to the arena it is approx. 500 m on a gravel road. From Vestlia Resort to the arena it is possible to walk/cycle on a gravel road, approx. 2.5 km.

Sunday June 22:

Arena Slåttajordet ski center.

The route to the start for all courses this day involve a chairlift up to Geilotoppen on this day, it is 800 m to walk from the arena to the lift.



Terrain and maps:

Sprint friday 20 June

Geilo City Centre, 1:4000, 2 m contour interval, published 2025.

The race takes place in urban terrain with some elements of trail running. The area around Geilo city centre contains both parks, hotels as well as areas with tight alleys and passages that invite to smart route choices. The area was first mapped and used during the Geilo 3-day race in 2022.

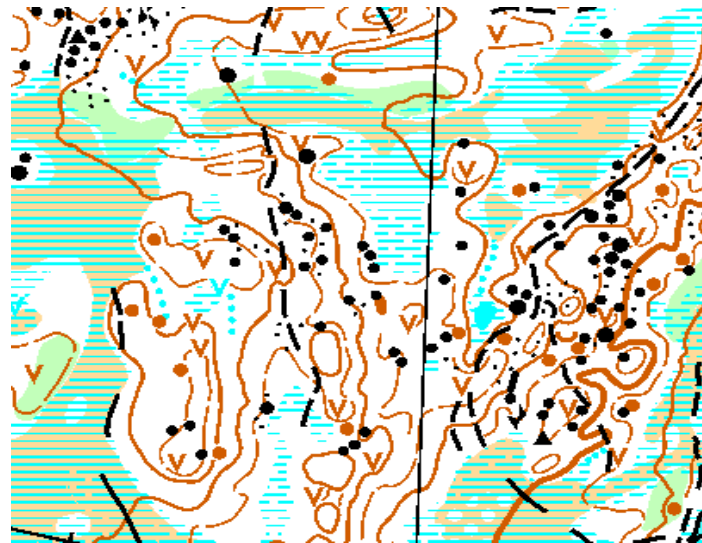




Middle distance Saturday 21 June:

Ustedalen, 1:7500/1:10000, 5 m contour interval, published 2025.

The terrain is located in the western part of Ustedalsfjorden, about 4 km from Geilo city centre. It is easy runnable, relatively flat and dominated by smooth pine forest hills and distinct moors. There is a high degree of details (stones, boulders and pits) which occasionally leads to demanding orientation. The area was first mapped and used during the Geilo 4-day race in 2021.

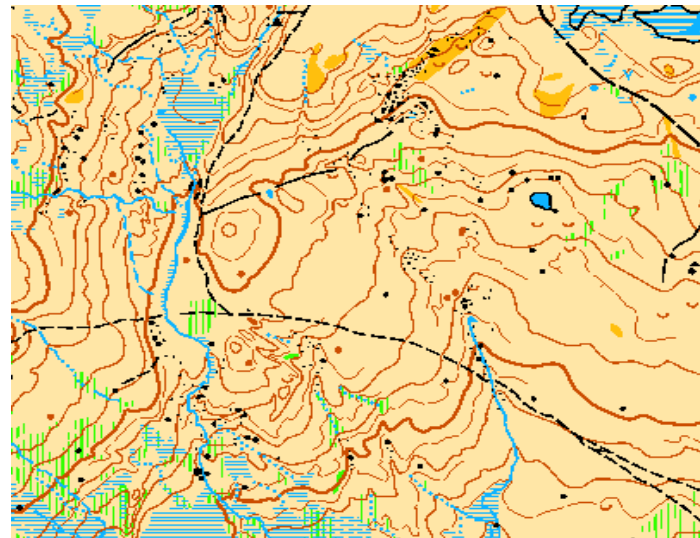




Long distance Sunday 22 June:

Geilohovda - Havsdalen, 1:7500/1:10000, 5 m contour interval, published 2025.

The main part of the terrain is above the tree line, which means good visibility and good runnability. An exception is a few green-shaded areas. Despite the open terrain, orientation is sometimes challenging due to steep slopes with many formations. The lower part of the map is pine/birch forest of more varying runnability.





Additional activities

On Saturday, June 20, a team competition will be held for participants aged 8-12 years with start and finish at the arena. In addition, there will be a varied offer for children and young people every day with "small trolls", childcare and various activities and competitions.

On Tuesday June 24 and Wednesday, June 25, Tunhovd 2-day orienteering will be held, a great opportunity to run in the beautiful terrain there and to obtain two additional races. The travel distance Geilo-Tunhovd is about 40 km.

During the break between the O-festival and Tunhovd 2-days there is a wide range of possible leisure activities in the area: Geilo IL is working on the possibility of setting up an orienteering-shooting ("orienteering biathlon") competition from Geilo Sport Center. If you need a break from map-reading this day, you can instead cycle in downhill trails at Vestlia, climb Hallingskarvet, take a day trip with the Bergen Railway to its highest station Finse and from there climb to the top of one of Norway's largest glaciers, "Hardangerjøkulen". Further activities involves river rafting at Dagali and of course: Langedrag Nature Park.

Classes and Course lengths (in km)



Ordinary classes		Sprint		Middle distance		Long distance	
Age	Level	Women	Men	Women	Men	Women	Men
9-10	N2	1,1	1,1	1,8	1,8	2,6	2,6
11-12	C	1,3	1,3	2,1	2,1	2,9	2,9
13	B	1,5	1,5	2,7	3,0	3,6	3,8
14	B	1,6	1,6	2,8	3,3	3,9	4,2
15	A	1,8	1,8	3,0	3,3	4,5	4,9
16	A	2,0	2,0	2,9	3,4	4,9	6,0
17-18	E	2,0	2,3	3,3	3,9	6,5	8,3
19-20	E	2,0	2,5	3,5	4,2	8,6	10,3
21	E	2,4	3,0	4,9	5,8	12,7	14,8
35	A	1,8	2,1	3,7	4,5	6,0	7,6
40	A	1,8	2,1	3,7	4,5	6,0	7,6
45	A	1,6	1,9	3,5	4,5	5,9	7,4
50	A	1,6	1,9	3,7	4,4	5,3	6,8
55	A	1,5	1,7	3,6	4,0	5,0	6,1
60	A	1,5	1,7	3,1	3,5	4,8	5,9
65	A	1,4	1,5	2,6	3,6	4,1	5,0
70	A	1,4	1,5	2,4	3,1	3,9	4,8
75	A	1,3	1,3	2,1	2,6	3,2	4,1
80	A	1,3	1,3	2,1	2,4	3,2	3,9
85	A	1,3	1,3	2,1	2,1	3,2	3,2



Open classes		Sprint	Middel distance	Long distance
	Level	Length	Length	Length
N1-åpen	N	0,8	1,5	1,5
N2-åpen 9-16	N	1,1	1,8	2,6
N2-åpen 17-	N	1,1	2,4	2,8
C-åpen 10-16	C	1,3	2,1	2,9
C-åpen 17-	C	1,3	2,5	3,2
B-åpen 10-16	B	1,4	2,0	3,2
B-åpen 17-	B	1,6	2,8	4,9
A åpen kort	A	2,1	2,9	4,0
A åpen mellom	A	-	3,4	5,8
A åpen lang	A	-	4,4	8,8

Map scales:

	Classes	Map scale
Sprint	All classes	1:4000
Mellomdistanse	D/H 15, D/H 16, D/H 17-18E, D/H 19-20E, D/H 21E	1:10000
	Remaining classes	1:7500
Langdistanse	D/H 17-18E, D/H 19-20E, D/H 21E	1:15000
	D/H 13, D/H 14, D/H 15, D/H 16, D/H 35, D/H 40, D/H 45	1:10000
	Remaining classes	1:7500



Registration

Registration via [Eventor.orientering.no](https://eventor.orientering.no) The regular deadline is Monday, June 9 and possible late registration until Monday, June 16. Open classes and age classes up to and including 12 years can also be done at the arena every day. All classes will use emiTag (touchfree) for the sprint.

In the middle and long distance, all classes use EMIT tags. Elite classes must also have emiTag for timing. There will be a possibility of rental tags for those who need them, NOK 50 per race.

Runners who are not members of a Norwegian o-club (both foreign and Norwegian) must pay in connection with registration using the Stripe solution in Eventor.



Fees

Age/class	Before ordinary deadline	Late registration	Deadline
12 years and younger	170 NOK	170 NOK	9 June
13 – 16 years	170 NOK	255 NOK	9 June
17 years and older	300 NOK	450 NOK	9 June
Elite	370 NOK	555 NOK	9 June
Direct classes – 16 years	170 NOK	170 NOK	On raceday
Direct classes 17 years -	300 NOK	300 NOK	On raceday
Team competition	275 NOK	275 NOK	18 June



Prizes

For everyone up to and including 12 years there will be a prize at the finish line every day, regardless of class. In addition, there will be prizes for everyone in the classes N1-open, N2-open 9-16, C-open 10-16 and B-open 10-16.

In ordinary classes D/H 13-16 years there is a prize for 1/3 of the runners in the class.

In classes D/H 17-18E, D/H 19-20E and D/H 21E there is a prize for 1/8 of the runners in the class.

In remaining classes, the winners will be awarded every day.

The main prize giving ceremony for Day 1 and Day 2, including entertainment will take place on Saturday afternoon at 19.00 in the center of Geilo. Prize ceremony for the long distance race will take place at the arena. Details on the prize ceremonies will be published in a PM.



Accommodation

A reduced fee (15% discount) for accommodation at Vestlia Resort and Highland Lodge can be obtained by direct booking at the hotel web pages and by using the code **Ofestival25**.

Vestlia Resort

- Room+breakfast
- Room+breakfast+dinner

The distance from Vestlia Resort to both arenas is about 2.5 km. To the arena day 2 you can walk or cycle on a nice flat gravel road or take a shuttle bus from the hotel.

Highland Lodge og Highland Lodge Fjellandsby

- Apartments with cooking facilities

The distance to the arena day 1 and 3 is about 1 km while the distance to arena day 2 is 3 km with the possibility to take the buss most of the way.

In Geilo and in Hol municipality there is also a wide selection of accommodation options, see [Accommodation at and around Geilo](#) or other internet resources for accomodation.



Key organizers

Race director:

Kyrre Lerøy Sataøen, Geilo IL

Course planners:

Sprint:

Jan Petter Hansen, IL Gular

Middle distance:

Rune Nygaard, IL Gular

Long distance:

Svein Linga, IL Gular

Technical delegates:

Jan Arild Johnsen, NOF

Kari Strand, Kongsberg OL

Odd Strand, Kongsberg OL

Kontakt, information and enquirees:

Kyrre L. Sataøen +47 900 59 384

Email : orienting@geiloil.no

www.ofestivalen.no

Sponsors and supporters



Ustekveikja
Energi



HALLINGPLAST

NONAME

VESTLIA RESORT

HL



BUSKERUD
FYLKESKOMMUNE



ELEKTRO 12:24
Elektrikeren din!



GEILO
TRYKK & REKLAME