

Welcome to



21 – 23 June 2019



www.mg2019.no

SpareBank 
NORD-NORGE

Midnattsolgaloppen 2019

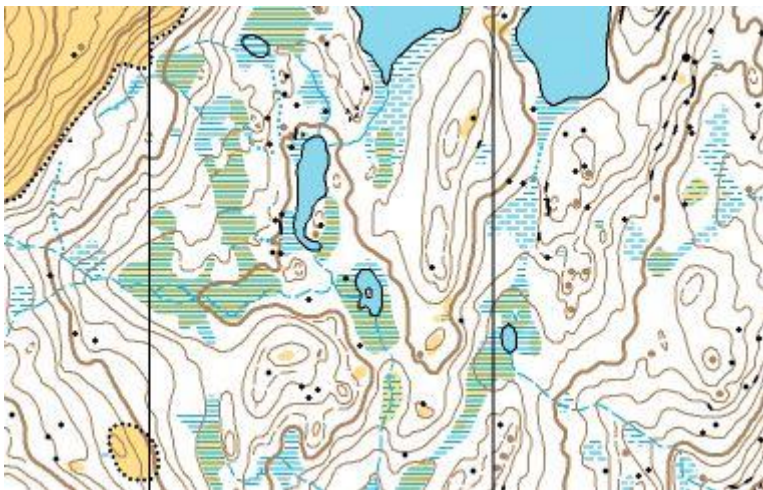
Welcome to Alta in 2019

Midnattsolgaloppen 2019 (Midnight-sun gallop) will be arranged in Alta. Alta o-lag is looking forward to host orienteers from all over the world, and to show you the area around Alta. We can offer three stages in great terrain. The races will take place at two event centers and will offer varied and demanding orienteering

Friday June 21: Grieg-seafood – stage

The event center for stage 1 Sarves alpinsenter (Sarves ski-resort), This is long distance. The terrain is hilly (but the majority of the climb one will make away on the way to start) with few paths and trails. It consist of arctic birchwood, and an open mountain plateau. The runability is high and the amount of mapped details are sparse.

Example from map, day 1.



Saturday June 22: Finnmark sand- stage

The second stage is middle distance. The event center is the same as on day 1, but the terrain is quite different. It is not so hilly, and has more paths, trails and fields

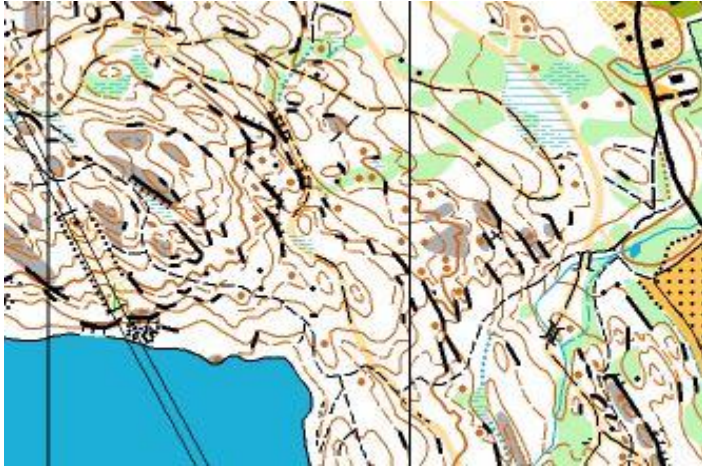
Example from map, day 2.



Sunday June 23: Statnett –stage

The last stage, is long distance. The event center is Kaskuru skistadion. The terrain is hilly, with some paths and ski-tracks. The amount of mapped details is high in some areas of the terrain.

Example from map, day 3.



On Thursday, 20.06, a race will be a race in Masi , about 70 km south of Alta. Further information will be available on Eventor, Facebook and the website www.mg2019.no

The Stages



	stage 1	stage 2	stage 3
Date	Friday June 21	Saturday June 22	Sunday June 23
Distance	Long	Middle	Long
First start	19.00	18.00	10.00
Map	Rafsbotn Mapped 2000 Revised 2018	Rafsbotn Mapped 2000 Revised 2018	Kaiskuru Mapped t 2002 Revised 2018

Directions:

Stage 1 and 2

Event center at Sarves alpinsenter (Sarves ski-resort)

Marked from E6 ca. 15 km north of Alta. Parking near the event center

Stage 3

Event center at Kaiskuru skistadion

Marked from E6, ca 4 km north of Alta. Parking near the event center

Alta o-lag can assist in organizing transport from Alta to the stages. If you need transport contact bjornar280669@hotmail.com

Classes and courses

Classes for women

	Day 1	Day 2	Day 3	Level	Scale
N Open	1,9	2,2	3,2	N	1:10000
D10	2,0	2,4	3,3	C	1:10000
D 11-12 N	1,9	2,2	3,2	N	1:10000
D 11-12	2,7	2,5	3,4	C	1:10000
D 13 -14	3,5	2,7	3,5	B	1:10000
D 13 – 16 N	2,6	2,4	3,5	N	1:10000
D 13 – 16 C	2,7	2,5	3,4	C	1:10000
D 15 - 16	4,2	3,1	4,5	A	1:10000
D 17 AK	5,5	3,3	5,6	A	1:10000
D15-16B	3,5	2,7	3,5	B	1:10000
D 17 B	3,5	2,7	3,5	B	1:10000
D 17 C	3,5	2,9	3,6	C	1:10000
D17 N	2,6	2,4	3,5	N	1:10000
D 17 – 18	6,5	3,9	6,1	A	1:10000
D 19 – 20	7,0	3,9	7,2	A	1:10000
D 21	8,7	4,4	7,9	A	1:10000
D 35	6,5	3,9	6,1	A	1:10000
D 40	5,5	3,3	5,6	A	1:10000
D 45	5,1	3,1	4,6	A	1:10000
D 50	4,2	3,1	4,5	A	1:7500
D 55	3,9	2,9	4,0	A	1:7500
D 60	3,2	2,8	3,6	A	1:7500
D 65	3,2	2,8	3,6	A	1:7500
D 70	3,2	2,6	3,4	A	1:7500
D 75	3,2	2,6	3,4	A	1:7500
D 80	3,2	2,6	3,4	A	1:7500

Classes for men

	Day 1	Day 2	Day 3	Level	Scale
N Open	1,9	2,2	3,2	N	1:10000
H 10	2,0	2,4	3,3	C	1:10000
H 11-12 N	1,9	2,2	3,2	N	1:10000
H 11-12	2,7	2,5	3,4	C	1:10000
H 13 -14	3,5	2,7	3,5	B	1:10000
H13 – 16 N	2,6	2,4	3,5	N	1:10000
H 13 – 16 C	2,7	2,5	3,4	C	1:10000
H 15 - 16	5,5	3,3	5,6	A	1:10000
H 15-16 B	3,5	2,7	3,5	B	1:10000
H17 AK	6,5	3,9	6,1	A	1:10000
H 17 B	3,5	2,7	3,5	B	1:10000
H 17 C	3,5	2,9	3,6	C	1:10000
H 17 N	2,6	2,4	3,5	N	1:10000
H17 – 18	7,0	3,9	7,2	A	1:10000
H 19 – 20	8,7	4,4	7,9	A	1:10000

H 21	11,8	5,2	9,7	A	1:10000
H 35	8,7	4,4	7,9	A	1:10000
H40	8,7	4,4	7,9	A	1:10000
H 45	7,0	3,9	7,2	A	1:10000
H 50	6,5	3,9	6,1	A	1:7500
H 55	5,5	3,3	5,6	A	1:7500
H 60	5,5	3,3	5,6	A	1:7500
H 65	5,1	3,1	4,6	A	1:7500
H 70	4,2	3,1	4,5	A	1:7500
H 75	3,9	2,9	4,0	A	1:7500
H 80	3,2	2,6	3,4	A	1:7500

Direct courses

There will be direct courses on A (long and short course), B, C and N level

	Day 1	Day 2	Day 3	Level	Scale
Direkte A-lang	7,0	3,9	7,2	A	1:10000
Direkte A-kort	3,9	2,9	4,0	A	1:7500
Direkte B	3,5	2,7	3,5	B	1:10000
Direkte C	3,5	2,9	3,6	C	1:10000
Direkte N	2,6	2,4	3,5	N	1:10000

Explanation of the different skill levels

N-courses: The course follows an obvious route choice along an easy-to-follow feature such as a path or a power line. All controls can be seen from these features. It is permitted for participants to run together. It is also allowed to be followed by another runner even though this runner is participating in another class.

C-courses: The course follows prominent features such as a path or a creek, but sometimes it will be quicker to leave these and run a straighter route choice. There will always be catching features if choosing to leave easy-to-follow features. There will always be an easier route choice.

B-courses: The course demands a basic understanding of contour-lines. In addition, it must be expected some high precision orienteering, especially in the last part towards the controls. Route choices appear.

A-courses: The most challenging courses, every orienteering technique should be mastered.

Entry

Entry Online entry using EVENTOR <http://eventor.orientering.no/Events/Show/10125> opens January 2019.

- Entry deadline 1: June 10th 23:59
- Entry deadline 2 : June 17th 23:59

After June 17th and to the race day it is only possible to enter at arena for direct courses. **Costs of entry are per race**, as shown below.

All runners must be registered in Eventor before making an entry to Midnattsolgaloppen. If you are not registered in Eventor go to <https://eventor.orientering.no/Register> to create a user account.

If you can't find your club or have other problems using Eventor please refer to the user guide at:
[http://eventor.orientering.no/Documents/Guide_Eventor - How to make an entry.pdf](http://eventor.orientering.no/Documents/Guide_Eventor_-_How_to_make_an_entry.pdf)

Age	June 10 th	June 17th
Up to 12 years	110 NOK per race	110 NOK per race
13 – 16 years	110 NOK per race	175 NOK per race
Above 17 years	180 NOK per race	280 NOK per race
Direct Courses	160 NOK per race (paid at stadion)	

EMIT punching system

Emit punching system will be used in all classes. Emit unit can be rented for 50 NOK per day.

If you have your own Emit card, the number must be entered in Eventor at the time of registry. If this is not done, you will automatically be assigned a rental Emit card and have to pay for the rental.

Payment

Norwegian clubs will receive an invoice after each entry deadline.

Foreign clubs pay the entry fee and Emitcard-rental at registration to:

- Receiver : Alta O-lag
- Postadress : c/o Thomas Frost, Bregneveien 47, N-9516 Alta
- Account: 4901.12.08834
- Bank: SpareBank 1 Nord-Norge
- Payment need to be marked with full name and club
- IBAN: NO6649011208834
- SWIFT/BIC: SNOWNO22xxx

All bank fees must be paid by the sender.

A fee of 50 NOK must be paid to change class and emit card number after 14th June. Rental Emit card costs 50 NOK per day. Emit cards which are failed to return will be charged 700 NOK. Emit card number must be entered in Eventor at the time of registry. If this is not done, you will automatically be assigned a rental Emit card and have to pay for the rental.

Accommodation

Accommodation will not be arranged from the event side, but in Alta there are many different possibilities for accommodation. You will find an overview at <http://www.visitalta.no/no/>

Midnattsolgaloppen homepage: www.mg2019.no

Overview of car rental companies

<https://avinor.no/flyplass/alta/til-og-fra-flyplassen/bilutleie>

Contact:

Event Manger: Kristin Tørum: +47 918 79 435

e-mail: mg.alta.2019@gmail.com

Course planner: Thomas Frost: +47 901 84 678

Our sponsors:



<https://www.sparebank1.no/nb/bank/privat.html>



Finnmark

<https://www.griegseafood.no/nb/>



<https://www.finnmarksand.no/>

Statnett

<https://www.statnett.no/>



<https://sarvesalta.no/>



<https://www.altakraftlag.no/>



<https://www.statkraft.no/>



<https://coop.no/>



Alta kommune