

Invitation

Midnattsolgaloppen

28th June – 2nd July 2017

Welcome to Tromsø in 2017!

Midnattsolgaloppen celebrates its 50th anniversary in 2017 and will this year be held in Tromsø. IL BUL Tromsø is looking forward to host orienteers from all over the world, and to show you the terrain around Tromsø in addition to the city itself.

Race 1, Wednesday 28th June & Race 2, Thursday 29th June

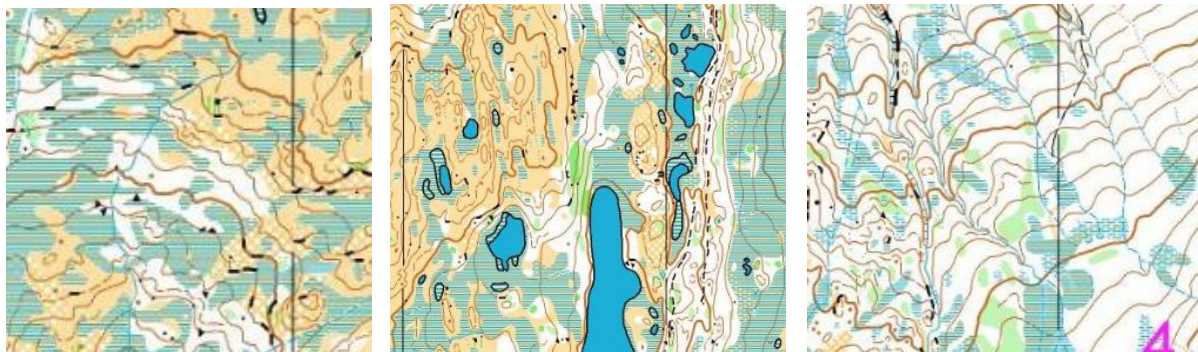
Map

“Reinlia”, 2008, mapped by Kristen Treekrem. Scale 1:7 500 / 1:10 000, equidistance 5 m.

Terrain

The terrain consists of two different terrain types; both open marsh covered hills and arctic birchwood. In general there is little vegetation. The terrain has high runability and moderately steep slopes. The amount of mapped details varies from very little to very high. The terrain will invite to different route choices, but there will also be parts of tricky technical orienteering.

Examples from the map



Arena

Straumbukta on Kvaløya Island, appx. 35 km from Tromsø city centre. Parking is 3 km from the arena centre. There will be shuttle buses from the parking to a bus stop 500 metres from the arena centre.

Race 3, Saturday 1st July & Race 4, Sunday 2nd July

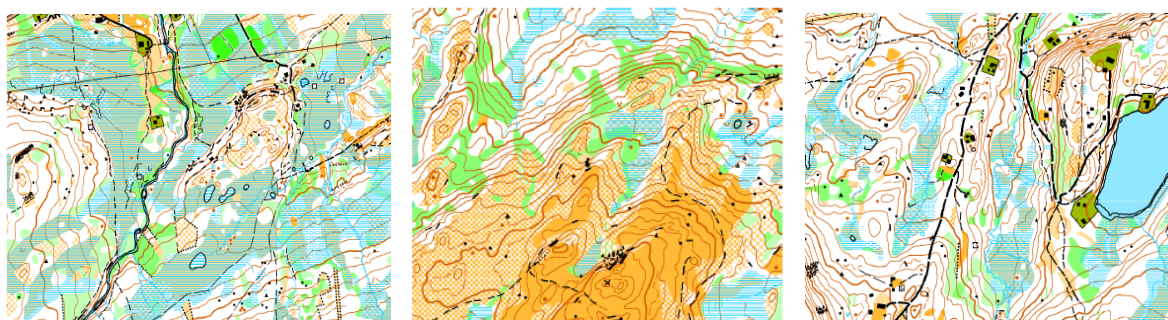
Map

“Skittenelv”, mapped in 2016 by Carl Henrik Bjørseth. Scale 1:7 500 / 1:10 000, equidistance 5 m.

Terrain

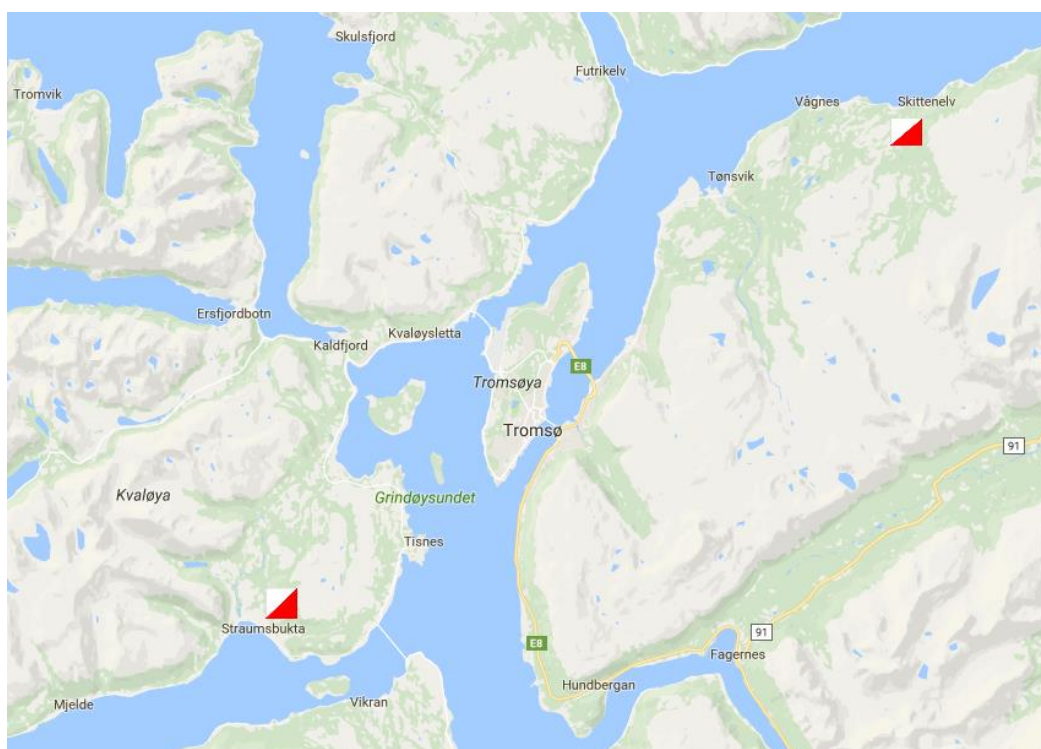
The terrain consists of highly runnable marshed woodlands with patches of open areas. The marshes are generally very firm and there is little vegetation. The terrain invites to high speed and intense use of the compass. The forest is both low arctic birch and the higher pine. Moderately steep slopes.

Examples from the map



Arena

Skittenelv school, 25 km from Tromsø city centre. Parking is on the arena.



The races

	Race 1	Race 2	Race 3	Race 4
Date	28 th June	29 th June	1 st July	2 nd July
Distance	Middle	Long	Middle	Long
Start time	19:00	17:00	14:00	11:00
Distance to start	1 – 2 km Beginners on arena	1 – 2 km Beginners on arena	1,5 – 2 km Beginners on arena	1,5 – 2 km Beginners on arena

Classes and courses

Class	Length	Level	Scale	Class	Length	Level	Scale
N-Open	1,5 – 2 km	N	1:10 000	Direct course N	1,5 – 2 km	N	1:10 000
W11-12 N	2 - 2,5 km	N	1:10 000	M11-12 N	2 - 2,5 km	N	1:10 000
W13-16 N	2 – 3 km	N	1:10 000	M13-16 N	2,5 – 3,5 km	N	1:10 000
W17 N	2 – 4 km	N	1:10 000	M17 N	2,5 – 4 km	N	1:10 000
W10	2 – 2,5 km	C	1:10 000	M10	2 – 2,5 km	C	1:10 000
W11-12	2,5 – 3 km	C	1:10 000	M11-12	2,5 – 3 km	C	1:10 000
W13-14	2,5 – 3,5 km	B	1:10 000	M13-14	3 – 4 km	B	1:10 000
W15-16	3 – 4,5 km	A	1:10 000	M15-16	3,5 – 5,5 km	A	1:10 000
W17 B	2,5 – 4 km	B	1:10 000	M17 B	3 – 4,5 km	B	1:10 000
W17 C	2,5 – 4 km	C	1:10 000	M17 C	3 – 5 km	C	1:10 000
W17-18	3,5 – 6,5 km	A	1:10 000	M17-18	4 – 7,5 km	A	1:10 000
W19-20	4 – 7 km	A	1:10 000	M19-20	4,5 – 9 km	A	1:10 000
W21	4,5 – 8,5 km	A	1:10 000	M21	5,5 - 11 km	A	1:10 000
W17 S	3 – 5,5 km	A	1:10 000	M17 S	4 – 7 km	A	1:10 000
W35	3,5 – 6 km	A	1:10 000	M35	4 – 8 km	A	1:10 000
W40	3,5 – 5,5 km	A	1:10 000	M40	4 – 7,5 km	A	1:10 000
W45	3,5 – 5 km	A	1:10 000	M45	3,5 – 7 km	A	1:10 000
W50	3,5 – 4 km	A	1:10 000	M50	3,5 – 6 km	A	1:10 000
W55	3 – 4 km	A	1:7 500	M55	3 – 5,5 km	A	1:7 500
W60	2,5 – 3,5 km	A	1:7 500	M60	3 – 5 km	A	1:7 500
W65	2,5 – 3,5 km	A	1:7 500	M65	3 – 4,5 km	A	1:7 500
W70	2 – 3 km	A	1:7 500	M70	2,5 – 4 km	A	1:7 500
W75	2 – 3 km	A	1:7 500	M75	2 – 3 km	A	1:7 500
W80	2 – 3 km	A	1:7 500	M80	2 – 3 km	A	1:7 500
Direct course A long	4 – 8 km	A	1:10 000	Direct course C long	3 – 5 km	C	1:10 000
Direct course A short	2,5 – 4 km	A	1:10 000	Direct course C short	2,5 – 4 km	c	1:10 000
Direct course B	2,5 – 4 km	B	1:10 000				

The lengths of the courses are subject to changes. If there is a low participant level some classes might be merged.

Explanation of the different skill levels

N-courses: The course follows an obvious route choice along an easy-to-follow feature such as a path or a power line. All controls can be seen from these features. It is permitted for participants to run together. It is also allowed to be followed by another runner even though this runner is participating in another class

C-courses: The course follows prominent features such as a path or a creek, but sometimes it will be quicker to leave these and run a straighter route choice. There will always be catching features if it is chosen to leave easy-to-follow features. There will always be an easier route choice.

B-courses: The course demands a basic understanding of contours. In addition, it must be expected to do some high precision orienteering, especially in the last part towards the controls. Route choices appear.

A-courses: The most challenging courses, every orienteering technique should be mastered.

Prizes

Classes	Each race	Over all
12 years and younger	All participants	None
13-16 years	Top 3	1/3 of participants
17 and above	Winner	1/8 of participants
Direct courses	No prizes	No prizes

Entry

Online entry using EVENTOR (<http://eventor.orientering.no/Events>) opens 1st January 2017.

- First entry deadline: April 1st 23:59
- Ordinary entry deadline: June 1st 23:59
- Late entries: June 23th 23:59

After June 28th and to the race day it is only possible to enter at arena for direct courses. Costs of entry are per race, as shown below. If you can't find your club or have other problems using Eventor please refer to the user guide at: <https://eventor.orientering.se/?culture=en-GB>.

Age	Before April 1 st	Before June 1 st	After June 1 st	At arena
Up to 12 y.o.	75 NOK	100 NOK	100 NOK	
13-16 y.o.	100 NOK	125 NOK	175 NOK	
Above 17 y.o.	175 NOK	225 NOK	275 NOK	

A, B, C, N direct courses				150 NOK
---------------------------	--	--	--	---------

EMIT punching system

Emit punching system will be used in all classes. Emit unit can be rented for 50 NOK per day.

Entry fees

Norwegian clubs will receive an invoice after each entry deadline.

Foreign clubs pay the entry fee to:

- Receiver: IL BUL-Tromsø
- Account: 4750.47.20884
- Payment need to be marked with full name and club
- IBAN: NO10 4750 4720 884
- SWIFT/BIC: SNOWNO22
- Postal address: Postboks 43, 9251 Tromsø, Norway

All bank fees must be paid by the sender.

A fee of 50 NOK must be paid to change class and emit card number after 15th June. Rental Emit card costs 50 NOK per day. Emit cards which are failed to return will be charged 600 NOK. Emit card number must be entered in Eventor at the time of registry. If this is not done, you will automatically be assigned a rental Emit card and have to pay for the rental.

Child care

Child care will be offered at the arena each race day. It will also be offered “småttroll” – a marked easy course for children between 3 and 9 years old.

Food

There will be both warm and cold meals for purchase on arena each race day.

Accommodation

O- Camp

There will be an o-camp where hard floor accommodation in school classrooms is offered. Tent and caravan parking will be possible as well. More info to come.

Other accommodation in Tromsø

There are several places to stay while visiting Tromsø. Both camping sites and hotels are within reasonable driving distance from the arenas. There are many tourists in Tromsø during the summer and accommodation can fill up quickly. It is therefore advised to book well in advance. We will try to do deals with local hotels, pay attention to the Facebook site “Midnattsolgaloppen2017” and the website of Midnattsolgaloppen, www.mg2017.no.

Friday June 30rd is a non-race day with many exciting activities for all ages

Tromsø has a lot to offer on the rest day, both for those who seek an active rest day and those who want to rest sore legs. There are unlimited places to go hiking at every level in the mountains surrounding Tromsø. Local guide companies have many exciting tours to offer, such as hiking, kayaking and cycling tours. For those who want a more relaxing day there are a lot of cafes and restaurants, museums etc in the city. Check out the website www.visittromso.no for more travel tips in the Tromsø region.