



# Bulletin 1



NTNUI, OL Trollelg and Wing  
invites You to

## Trondheim Sprint Camp 2016 and Camp Norway

### Program:

	Friday	8 <sup>th</sup>	April 2015	Training (model event), individual loops
1.	Friday	8 <sup>th</sup>	April 2015	Individual race, 13-15 min
2.	Saturday	9 <sup>th</sup>	April 2015	Individual race, 13-15 min, <b>WRE status</b>
3.	Saturday	9 <sup>th</sup>	April 2015	Individual race, 13-15 min
	Saturday	9 <sup>th</sup>	April 2015	Get together party ☺
4.	Sunday	10 <sup>th</sup>	April 2015	Chasing start, 18-20 min
	Sunday	10 <sup>th</sup>	April 2015	Prize ceremony

### Classes:

Men:	M 13-16,	M17-20,	M21-,	M40-
Women:	W13-16,	W17-20,	W21-,	W40-

### Maps:

Regional map with direct flights from abroad destinations.

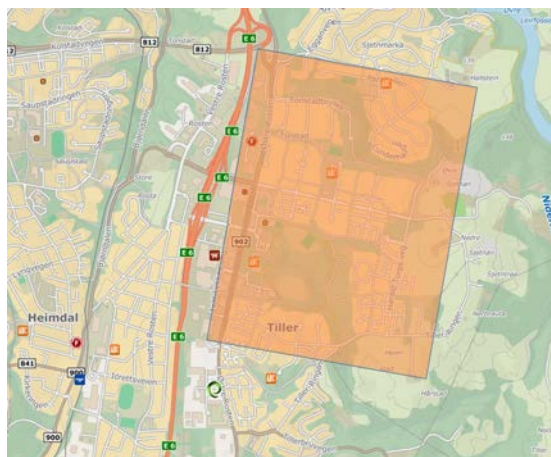


There might be other destinations with direct flights to Trondheim.

If early booking the costs should be quite nice ☺

From airport (Værnes) You have to take public transport (bus) to city center, 45 min at a cost ab. 10 Euro.

## Trondheim City map with event areas and embargoed area for WRE competition



## Competition maps:

Map scale 1: 4000 or 1: 5000  
Equidistance 2,0m or 2,5m  
Links to old maps see <https://tsc2016.wordpress.com/>

## Accommodation and transport:

### Hotels

#### Thon Hotell Gildevangen

2 beds	NOK 695
3 beds	NOK 895
4 beds	NOK 1095
	Include breakfast
E-mail	<a href="mailto:gildevangen.booking@thonhotels.no">gildevangen.booking@thonhotels.no</a>
Phone	(+47) 73870130 ( 1 for booking)
Booking reference	24068138 or Trondheim Sprint Camp
Lates booking	18.03.2016
<a href="http://www.thonhotels.no/hoteller/land/norge/trondheim/thon-hotel-gildevangen/">http://www.thonhotels.no/hoteller/land/norge/trondheim/thon-hotel-gildevangen/</a>	

#### P-Hotels (Brattøra)

1 bed	NOK 599
2 beds	NOK 699
3 beds	NOK 799
	Include light breakfast (sandwich/juice)
E-mail	<a href="mailto:brattora@p-hotels.no">brattora@p-hotels.no</a>
Phone	(+47) 73604005
Booking reference	Trondheim Sprint Camp
Lates booking	31.03.2016
<a href="http://p-hotels.no/">http://p-hotels.no/</a>	

### Transport:

From the city centre to the WRE arena, there are public transport. More information will come in PM

## Entry:

Registration : <http://eventor.orientering.no/Events/Show/6203>

Registration Fee :

Age 13 -16 years            NOK: 125, single competition  
Age >16 years            NOK: 150, single competition  
Training (Model event): NOK: 50, all ages

Registration date:

Early entry until Mars 31<sup>th</sup> 23.59,  
Late entry, until April 5<sup>th</sup> , 23.59, extra fee of 50%, 5 april

Runners from foreign clubs have to pay up front:

IBAN:            NO8792351598036  
SWIFT/BIC      KBNONO22

## Key personnel:

Event director:

Per Einar Pedersli  
[per.pedersli@online.no](mailto:per.pedersli@online.no)  
+47 99470205

Mapper:

Course setters:

Agnar Renolen  
Hallvard Seim Grøvlen, OL Trollelg  
Agnar Renolen, Wing OK  
Rasmus Theisen, NTNUI  
Svein Erik Bratsberg, Wing OK

IOF Event advisor:

Jan Arild Johnsen, Norway