



# Midnattsolgaloppen 2017

## PM and programme

BUL-Tromsø welcomes all orienteers to Midnattsolgaloppen 2017 in Tromsø. We hope our guests will have an excellent experience with arctic orienteering challenges and social gatherings under the midnight sun.

### Information for all days

#### Event office

- Hire Emit cards are to be collected per club. Hired cards are to be kept for all races.
- Distribution of maps for the classes up to 12 years and all N-classes
- Registration for Open courses
- Distribution of start bibs, backup tags for Emit cards, and safety pins for races 2, 3 and 4.
- Opens 2 hours before the start the first days and 1 ½ hours before the start the other days, and closes approx. 2 hours after the first start.

#### Late registration and direct courses

- Late registration before 24/6 in Eventor
- Registration for Open courses in the event office

#### Start bibs

- Use the same start bib for all races (Please note that the start bibs are not washing machine proof)
- The first race day there is self service of start bibs, backup tags for Emit cards, and safety pins. These are placed next to the arena on the way to the start.
- Start bibs that are not collected the first day are available at the event office the other days.

#### Punching system

- All competitors have to use Emit cards.
- Use the same card for all races
- You have to use the card that you registered, or hired. Check that the card number in the start list is correct
- One Emit card is to be used by only one competitor
- Changes of Emit card number are to be done at the event office

#### Control descriptions

Control descriptions use IOF-symbols, and are printed on the maps. In addition there will be separate control descriptions available at the start.

#### Restricted areas

You are not allowed to cross private areas (for instance gardens). These are marked with an olive green colour on the map, but are not marked in the terrain.

## Start

- There are 2 starts:  
Start 2: classes N-Open, D11-12 N, H11-12 N D13-16 N, H13-16 N, D17 N, H17 N, Direct N, D10, H10, D11-12 and H11-12  
Start 1: Other classes
- The way to both starts places are marked by red and yellow tapes. For distance to the starting places, please see section for each race.
- All N-classes have free starting times and may start 1 hour before the ordinary start time. In all N-classes it is possible to be accompanied by other competitors even if they will participate in other classes.
- Starting procedure:
  - \* 3 minutes before your starting time enter the appropriate section
  - \* 2 minutes before your starting time separate control descriptions may be collected.
  - \* At the exact start time pick up map and punch the start control unit (0-unit), (except for classes D/H-12 and N-classes which collect their maps at the event office)
- Runners who are delayed for start have to address the start crew in a separate section at start
- A few mobile toilettes are available close to the start
- Clothes left at the start will not be transported back to the arena until after the last starting time.

## Finish

- There is a marked course from the last control to the finish.
- All runners have to punch the Emit card at the control unit at finish.
- Maps will not be collected at the finish.

## Results service

Unofficial result lists will be published at the result wall continuously. Official results will be published on the Eventor site after each race.

## Toilettes

Toilettes are available at the arena.

## Child care

Child care free of charge will be offered at the arena each race day.

## “Småttroll” course

“Småttroll”, which is a very simple orienteering course for accompanied children, is offered each day.  
(NOK 30 per child per day)

## Prizes and ceremonies

- Prize ceremonies will take place consecutively after the classes finish. Start up of ceremonies will be announced by the speaker
- Number of prizes in the different classes:

Classes	Each race	Over all
12 years and younger	All participants	None
13-16 years	Top 3	1/3 of participants
17 and above	Winner	1/8 of participants
Direct courses	No prizes	No prizes

### Food and beverages sale's service

The sale's service offers cold beverages, coffee, cakes, waffles and selected hot dishes:

Sausages and burgers are barbecued all days. It will also be possible to buy Midnattsolgaloppen t-shirts.

The sale's service accepts cash, card payment and Vipps.

### First aid

There will be some first aid equipment available at the event office.

### Course lengths and scale

Klasse	Nivå	Målestokk	Dag 1	Dag 2	Dag 3	Dag 4
<b>N-ÅPEN</b>	N	1:10 000	1,9	1,9	1,4	1,4
<b>D10</b>	C	1:10 000	2	1,9	2	2,4
<b>D11-12</b>	C	1:10 000	2,1	2,8	2,1	2,5
<b>D11-12 N</b>	N	1:10 000	1,9	1,9	1,4	1,4
<b>D13-14</b>	B	1:10 000	2,9	4	3,2	4
<b>D13-16 N</b>	N	1:10 000	1,9	1,9	1,4	1,4
<b>D13-16C</b>	C	1:10 000	2,9	4,1	2,4	3
<b>D15-16</b>	A	1:10 000	3,5	4,7	3,6	4,4
<b>D17 AK</b>	A	1:10 000	3,8	5,2	3,8	5
<b>D17 B</b>	B	1:10 000	2,9	4	3,2	4
<b>D17 C</b>	C	1:10 000	2,9	4,1	2,4	3
<b>D17 N</b>	N	1:10 000	1,9	1,9	1,4	1,4
<b>D17-18</b>	A	1:10 000	3,8	5,2	3,8	5
<b>D19-20</b>	A	1:10 000	4,1	7,4	4,8	7,2
<b>D21</b>	A	1:10 000	5,2	9,1	5,8	8,8
<b>D35</b>	A	1:10 000	3,8	6,4	4,3	6,2
<b>D40</b>	A	1:10 000	3,8	5,2	3,8	5
<b>D45</b>	A	1:10 000	3,5	4,7	3,6	4,4
<b>D50</b>	A	1:10 000	3,5	4,7	3,6	4,4
<b>D55</b>	A	1:7 500	3	4,5	3,3	3,9
<b>D60</b>	A	1:7 500	2,7	3,3	3	3,9
<b>D65</b>	A	1:7 500	2,7	3,3	3	3,9
<b>D70</b>	A	1:7 500	2,5	2,9	2,3	3
<b>D75</b>	A	1:7 500	2,5	2,9	2,3	3
<b>D80</b>	A	1:7 500	2,5	2,9	2,3	3
<b>Direkte C kort</b>	C	1:10 000	2,4	3,2	2,3	2,9
<b>Direkte A kort</b>	A	1:7 500	2,4	4,7	3,9	4
<b>Direkte N</b>	N	1:10 000	1,9	1,9	1,4	1,4

Klasse	Nivå	Målestokk	Dag 1	Dag 2	Dag 3	Dag 4
<b>H10</b>	C	1:10 000	2	1,9	2	2,4
<b>H11-12</b>	C	1:10 000	2,1	2,8	2,1	2,5
<b>H11-12 N</b>	N	1:10 000	1,9	1,9	1,4	1,4
<b>H13-14</b>	B	1:10 000	2,9	4,2	3,2	4
<b>H13-16 N</b>	N	1:10 000	1,9	1,9	1,4	1,4
<b>H13-16C</b>	C	1:10 000	2,9	4,1	2,4	3
<b>H15-16</b>	A	1:10 000	3,8	5,2	3,8	5
<b>H17 AK</b>	A	1:10 000	3,8	6,4	4,3	6,2
<b>H17 B</b>	B	1:10 000	2,9	4,2	3,2	4
<b>H17 C</b>	C	1:10 000	2,9	4,1	2,4	3
<b>H17 N</b>	N	1:10 000	1,9	1,9	1,4	1,4
<b>H17-18</b>	A	1:10 000	4,7	8,1	4,8	7,2
<b>H19-20</b>	A	1:10 000	5,2	9,1	5,8	8,8
<b>H21</b>	A	1:10 000	6,1	10,4	6,3	11,1
<b>H35</b>	A	1:10 000	5,2	9,1	5,8	8,8
<b>H40</b>	A	1:10 000	4,7	8,1	4,8	7,2
<b>H45</b>	A	1:10 000	4,1	7,4	4,8	7,2
<b>H50</b>	A	1:10 000	3,8	6,4	4,3	6,2
<b>H55*</b>	A	1:7 500	3,4	5,8	4,1	5,8
<b>H60*</b>	A	1:7 500	3,4	5,8	4,1	5,8
<b>H65</b>	A	1:7 500	3	4,5	3,3	3,9
<b>H70</b>	A	1:7 500	3	4,5	3,3	3,9
<b>H75</b>	A	1:7 500	2,5	2,9	2,3	3
<b>H80</b>	A	1:7 500	2,5	2,9	2,3	3
<b>Direkte C lang</b>	C	1:10 000	3,4	4,4	2,9	4,3
<b>Direkte A lang</b>	A	1:10 000	4,1	7,1	5,1	6,8
<b>Direkte B</b>	B	1:10 000	2,9	4	3	3,5

\* Classes H55 and H60 have scale 1:10 000 on day 4. The other days 1:7 500.

## Programme

	Wednesday 28/6	Thursday 29/6	Saturday 1/7	Sunday 2/7
Parking opens	16.30	15.00	12.00	09.00
Shuttlebus starts	16.30	15.00		
Event office opens	17.00	15.30	12.30	09.30
Sales start	17.00	15.30	12.30	09.30
Child care and Småtroll opens	17.30	15.30	12.30	09.30
Start classes with free start (N-classes)	18.00	16.00	13.00	10.00
Official opening	18.30			
First start	19.00	17.00	14.00	11.00
Last start	Approx 21.00	Approx 19.00	Approx 16.00	Approx 13.00
Prize ceremonies	To be announced	To be announced	To be announced	To be announced

## Key personell

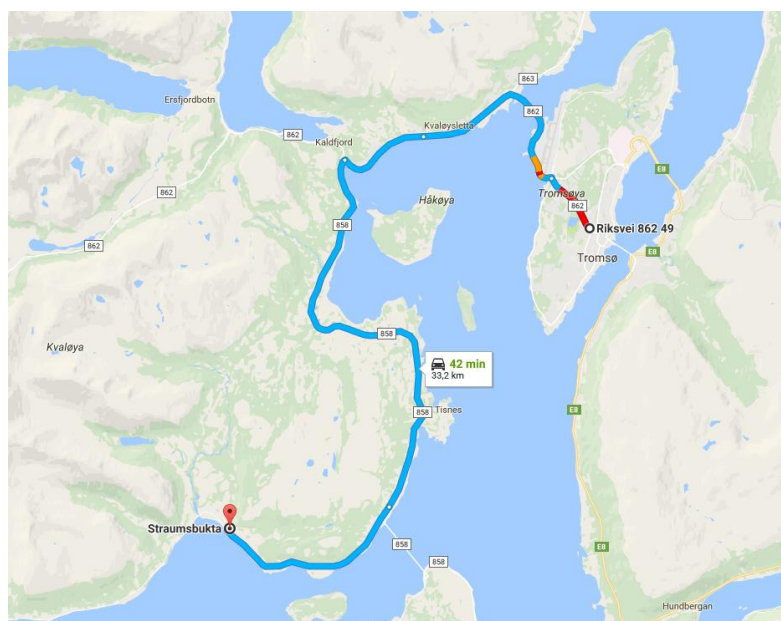
- Head of event: Liv Karen Johannessen
- Course coordinator: Hallvard Nordbrøden
- Technical services: Per Arne Engstad

## Information race 1, Wednesday June 28

### Access

Straumbukta at Kvaløya island. Follow road number R862 south on Kvaløya until you get to Eidkjosen. Continue straight ahead following road number R858 for approx. 15 km to the roundabout. Go straight in the roundabout and continue approx. 6 km to Straumbukta. Here we urge you to drop off passengers, and continue to the parking area. Walking distance from the drop off to the arena is 1000m following a dirt road.

Map (google map, works also on mobile devices) is to be found [here](#).



## Parking

There are no possibilities for parking at the arena. Parking is located 2 km further from the drop off, at the local school. From here there will be continuous shuttlebus service back to the unload area. The bus will also return to the parking after the races. Parking fee is NOK 50 per day including the shuttlebus. Cash and Vipps are accepted.

Please note! Due to limited bus capacity, we urge all cars to let off passengers at the unload area.

## Maps and terrain

Reinlia, published 2008, revised 2017.

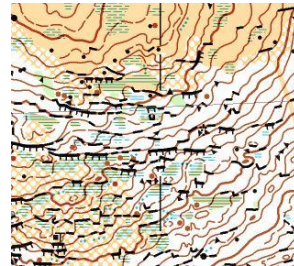
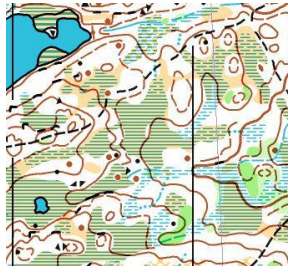
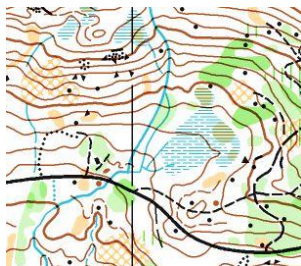
Mapped by: Kristen Treekrem, Thomas Johnsen (2017).

Scale: 1:10 000/1:7 500. Equidistance: 5m.

Course setter: Geir Moholt

The terrain consists of arctic birchwood, marches and open areas. The runability varies, but is mostly good. The hills are at some places steep, but have mostly a moderate steepness. The longer courses will run through a very detailed slope with cliffs and blocks. The cliffs are often larger than they may seem from the map and may be difficult to pass. Please be careful. There are a few unclear trails that are not marked on the map.

Relevant trails for N- and C-courses have been updated on the map, but have some unclear parts that are marked with red and white ribbons in the terrain.



## Start

First start is at 19.00. All N-classes may start from 18.00. There is a distance of 1400 meters to start 1 following a dirt road and trails, approx. 15 minutes of walking. Start 2 is adjacent to the arena.

## Information race 2, Thursday June 29

### Access and parking

As for day 1.

### Maps and terrain

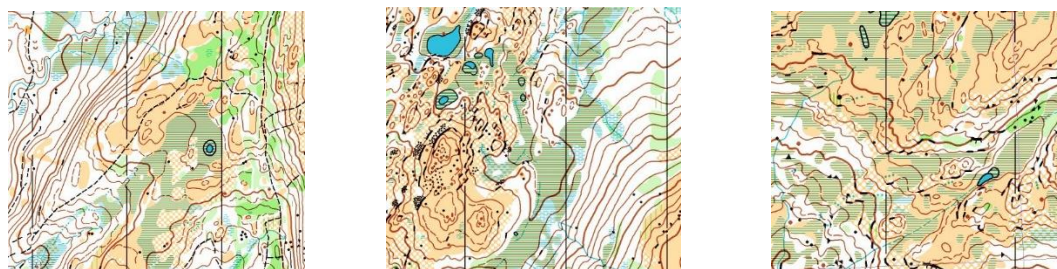
Same map as day 1.

Course setter: Thomas Johnsen

The terrain consists of arctic birchwood, marches and open areas. The runability varies, but is mostly good. The longer courses will run through a very detailed and stony area. Part of the courses are on the mountain with high visibility. There are a few unclear trails that are not marked on the map.

Areas marked on the map as dense vegetation but high visibility, are at places more overgrown.

Relevant trails for N- and C-courses have been updated on the map, but have some unclear parts that are marked with red and white ribbons in the terrain.



## Start

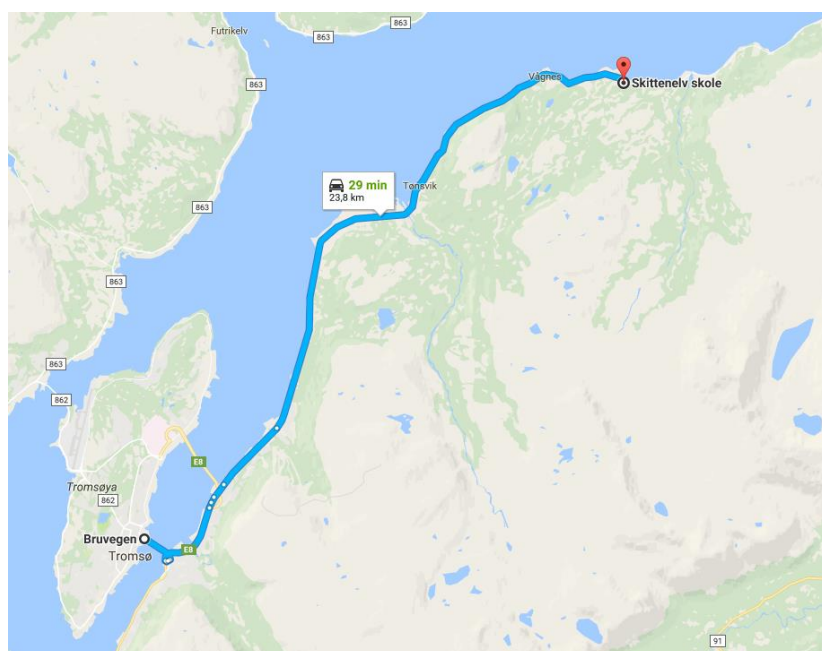
First start at 17.00. All N-classes may start from 16.00. There is a distance of 500 meters following a trail to start 1. The trail is steep, prepare to use some time, minimum 15 minutes in a moderate pace. Start 2 is adjacent to the arena.

## Information race 3, Saturday July 1

### Access

Skittenelv at Tromsø's mainland. Follow road number F53 north from Tromsdalen, approx. 24 km.

Map (google map, works also on mobile devices) is to be found [here](#)



### Parking

Parking at or close to the arena. Max 150m walking from parking to arena. Parking fee NOK 50.

### Maps and terrain

Skardåsen, published 2010, revised 2017.

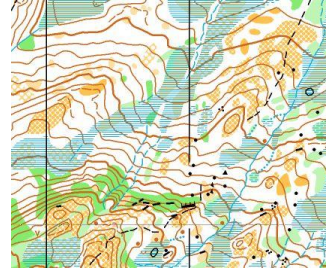
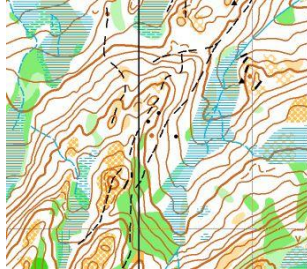
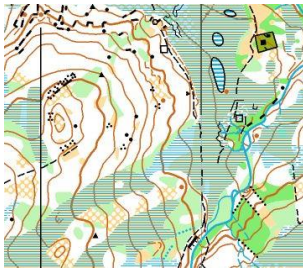
mapped by: Carl Henrik Bjørseth



Scale: 1:10 000/1:7 500. Equidistance: 5m.

Course setters: Mathilde Skaare og Hallvard Nordbrøden

The terrain consists of open birchwood and large open marches. The curves vary with both sloping hills and flat areas. The upper part of the terrain has high runability and is very open. In general there are few details and at places quite diffuse. Some might think that stones and cliffs are smaller than what is common.



### Courses

Most courses have to pass a reindeer fence. Two controls are placed on each side of the fence and all runners have to follow a marked route between these controls. Competitors on their way to start will pass here also, so please be careful.

There is a large creek in the terrain that most courses will have to cross. Because of late snow melting there is a lot of water and it is difficult to pass at places. Places to cross are marked on the map, but it is also possible to cross other places.

### Start

First start at 14.00. All N-classes may start from 13.00. The distance to start 1 is 2000 meters. The trail is wet and uphill, minimum 30 minutes of walking. Start 2 follows the marking to start 1, and is 400 meters from the arena.

## Information race 4, Sunday July 2

### Access and parking

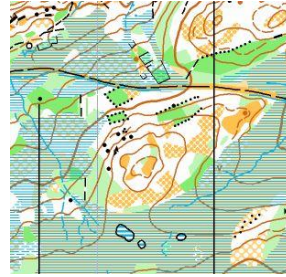
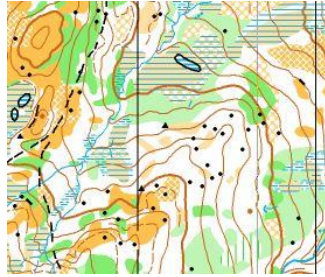
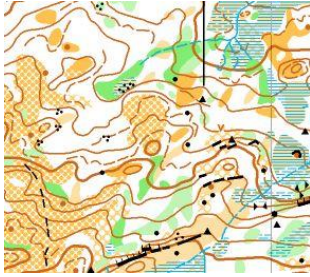
As for day 3.

### Maps and terrain

Same map as day 3.

Course setters: Mathilde Skaare og Hallvard Nordbrøden

The terrain consists of open birchwood and large open marches. The curves vary with places of very detailed curves. The upper part of the terrain has high runability and is very open. In general there are few details and at places quite diffuse. Some might think that stones and cliffs are smaller than what is common.



### Courses

There is a large creek in the terrain that most courses will have to cross. Because of late snow melting there is a lot of water and it is difficult to pass at places. Places to cross are marked on the map, but it is also possible to cross other places.

For the classes N-Open, D/H11-12N, D/H17N and D/H13-16N there is tape marking from the control to the nearest trail.

### Start

First start at 11.00. All N-classes may start from 10.00. The distance to start 1 is 2200 meters. The trail is wet and uphill, minimum 30 minutes of walking. Start 2 follows the marking to start 1, and is 200 meters from the arena.